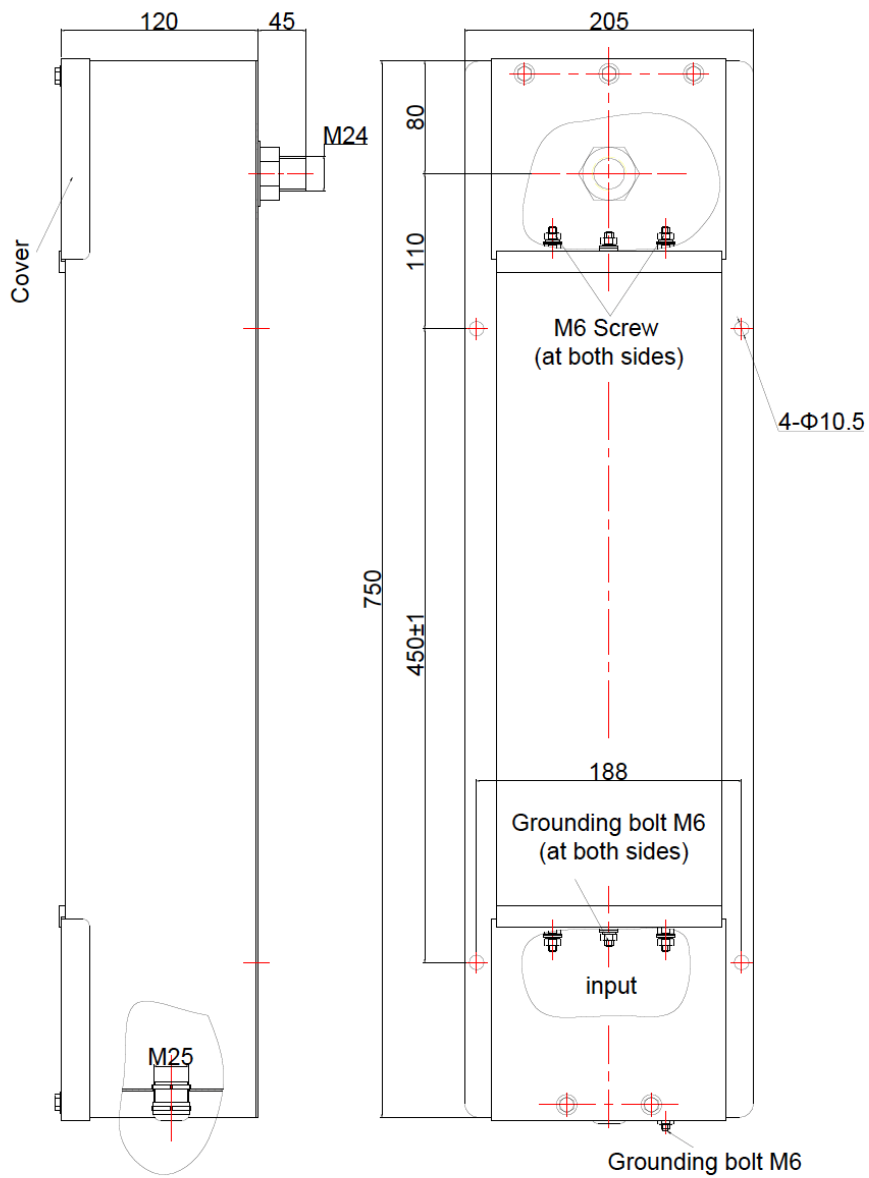


DATASHEET

(POWER LINE EMI FILTER, Type:TPF282C-16)

1. Type: TPF282C-16

2. Dimensions (mm):





3. Net Weight :

13.6 kg

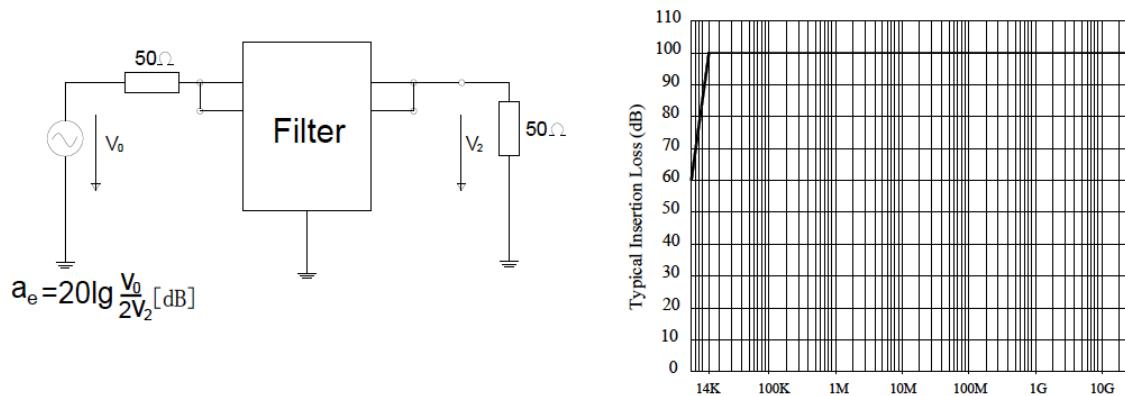
4. Technical Data :

- ① Rated Voltage: 277VAC/500VDC
- ② Operating Frequency: 0-60 Hz
- ③ Rated Current: 2x16 A
- ④ Insertion Loss: 100dB, 14kHz-40GHz
- ⑤ Climatic Category: 25/085/21
- ⑥ Leakage current: 3.9A (@250VAC,50Hz)

5. Assembly Parts :

- ① M24 Conduit Screw: 1pc
- ② Gasket 24: 1pc
- ③ M24 Screw Nut: 1pc
- ④ EMI Gasket 24: 1pc
- ⑤ Cable Gland M25: 1pc
- ⑥ Certificate: 1pc

6. Typical Insertion Loss Performance Curve (acc. to MIL-STD-220)



7. Installation Diagram :

